

## OPTIONAL FEATURES



Sound Proof Enclosure



Infeed Conveyor Belt with Metal Detector



Personnel Platform with Side Loading Hopper

## TECHNICAL DATA

Model	GXC800	GXC1000	GXC1200
Dimensions L / W / H (mm)	2,170 x 1,785 x 3,100	2,170 x 1,985 x 3,100	2,170 x 2,185 x 3,100
Hopper Opening (mm)	750 x 810	950 x 810	1,150 x 810
Rotor Diameter (mm)	Φ 520	Φ 520	Φ 520
Rotor Length (mm)	800	1,000	1,200
Rotor Speed (rpm)	520	520	520
Screen (mm)	Φ 12	Φ 12	Φ 12
Rotor Knives (pcs)	5 x 2	5 x 2	5 x 2
Counter Knives (pcs)	2 x 1 + 1 x 1	2 x 2 + 1 x 2	2 x 2 + 1 x 2
Drive Power (kW)	55 ~ 75	55 ~ 90	75 ~ 90
Hydraulic Power (kW)	1.5	1.5	1.5
Approximate Weight (kg)	4,000	4,800	5,150

Model	GXC1000T	GXC1200T	GXC1600T
Dimensions L / W / H (mm)	2,500 x 2,060 x 3,325	2,500 x 2,260 x 3,325	2,500 x 2,660 x 3,325
Hopper Opening (mm)	950 x 1,025	1,150 x 1,025	1,550 x 1,025
Rotor Diameter (mm)	Φ 660	Φ 660	Φ 660
Rotor Length (mm)	1,000	1,200	1,600
Rotor Speed (rpm)	520	520	520
Screen (mm)	Φ 12	Φ 12	Φ 12
Rotor Knives (pcs)	5 x 2	5 x 2	5 x 4
Counter Knives (pcs)	3 x 2	3 x 2	3 x 2
Drive Power (kW)	75 ~ 110	90 ~ 132	110 ~ 160
Hydraulic Power (kW)	1.5	2.25	2.25
Approximate Weight (kg)	5,800	7,400	10,000

Model	GXC1200G	GXC1600G	GXC2000G
Dimension L / W / H (mm)	2,625 x 2,470 x 3,900	2,625 x 2,870 x 3,900	2,600 x 3,270 x 3,900
Hopper Opening (mm)	1,170 x 1,100	1,570 x 1,100	1,970 x 1,100
Rotor Diameter (mm)	Φ 800	Φ 800	Φ 800
Rotor Length (mm)	1,200	1,600	2,000
Rotor Speed (rpm)	480	480	480
Screen (mm)	Φ 12	Φ 12	Φ 12
Rotor Knives (pcs)	7 x 2	7 x 4	7 x 4
Counter Knives (pcs)	3 x 2	3 x 2	3 x 4
Drive Power (kW)	110 ~ 160	160 ~ 250	250 ~ 315
Hydraulic Power (kW)	2.25	2.25	2.25
Approximate Weight (kg)	9,500	12,500	16,000

Please Note: Technical data provided is indicative only and may be subject to change without notice



GENOX RECYCLING TECH CO., LTD  
2 Xiqiao, Dongchong, Panyu, Guangzhou, China  
Tel: +86-20-66851345 Fax: +86-20-66851347 PC: 511453  
www.genoxtech.com info@genoxtech.com



# GRAN-EXCALIBUR

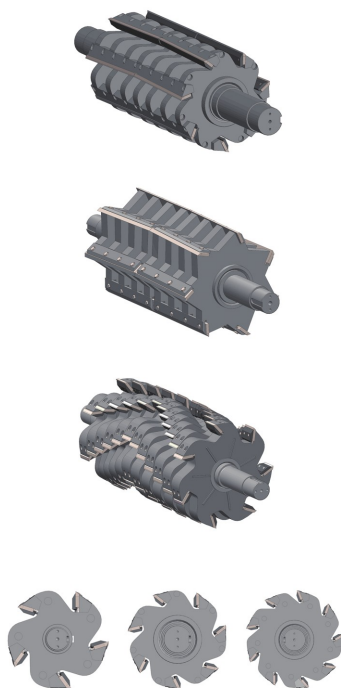


## GXC SERIES HEAVY DUTY GRANULATORS

www.genoxtech.com

## FEATURES

GXC Series Heavy Duty Granulators with power ratings of 55kw to 315kw are designed for high throughput processing. With a variety of rotor configurations available, these granulators have a wide range of applications including; hollow and voluminous materials (i.e. plastic drums, crates and chairs), flexible materials such as films, woven bags and rubber, tougher materials such as profiles, thick sheets, and other general plastics.



### V-Rotor

GXC Series machines are supplied with an open V-Rotor as standard, which is suitable for most types of material. The double shear, V configuration of the forward set blades creates a highly efficient double scissor cut, and encourages material to the centre of the cutting chamber. This results in reduced power consumption, even blade wear, reduced wear on the chamber sidewalls and optimum throughput.

### VB-Rotor

Our rear set V-Rotor design (known as the VB-Rotor) is recommended for certain lighter duty applications. The open design of the rotor allows material to expand and move around within the cutting chamber. This rotor also allows good through the machine to aid cooling, therefore reducing heat build up and the production of fines.

### C-Rotor

The C-Rotor is a heavy duty, high inertia, semi-closed design intended for use in demanding applications. The numerous, individually replaceable blades are secured by firmly by the strong precision machined blade supports. This rotor design creates a cascade cutting effect which is ideal for processing of tough materials and is also well suited for the granulation of profiles.

### Configurable Rotor Blade Rows

The large diameter rotors of the GXC series machines are available with a choice of 5, 7 or 9 rows of rotor blades to suit the specific application. They can therefore achieve the ideal combination of power and cutting efficiency, thus ensuring high throughput volumes and top quality granulated products.

## DESIGN & FEATURES



### Heavy Duty Bearings

The rotor is mounted on high quality, oversized, spherical bearings outboard of the cutting chamber to avoid product & liquid migration into the bearing cavity through the shaft seals, and subsequent bearing failure due to material contamination in the lubricant.



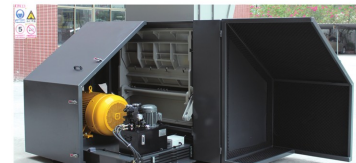
### Hydraulic Opening Device

GXC Series machines are equipped with dual hydraulic circuits and associated lift cylinders to allow for excellent access to both the upper cutting chamber, and lower screen support cradle. The machines can therefore be opened quickly with minimal effort which make maintenance tasks and inspection procedures much easier.



### Auxiliary Flywheel

To enhance rotor cutting force and thus improve machine efficiency, an auxiliary flywheel is available as option mounted on the non-drive side of the main rotor shaft. The increased inertia reduces the possibility of the rotor slowing down under heavy loads and reduces stress on the motor and drive belts. The drive motor power consumption is therefore much more steady.



### Sound Proof Enclosure

On request these granulators can be supplied with an optional sound proof enclosure, resulting in much quieter operation. In order to keep the machine as compact and aesthetically pleasing as possible, the motor and hydraulic power unit are mounted within the enclosure of the machine. Enclosure fitment enables installation of these units into existing operations with minimal disruption.